

RELAYS & CONTACTORS

KELE MOTOR STARTER INTERFACE PIL-2



DESCRIPTION

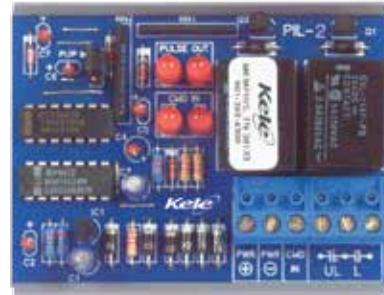
The **Kele PIL-2 board mounted motor starter interface** is designed to provide momentary contact closures to control motor starters with momentary start/stop push buttons. The **PIL-2** acts as a remote start/stop station using a single maintained contact from a controller, switch, or relay.

OPERATION

The **Model PIL-2** is operated by a single maintained N.C. or N.O. contact from a switch, relay, or controller. Closing the input contact causes the N.O. latch output to close momentarily for 300 ms to start a motor. Opening the input contact causes the N.C. unlatch output to open momentarily for 300 ms to stop a motor. A power-up feature allows the selection of either an immediate pulse out (PUP position), based on the current state of the input contact, or a pulse out only when the input contact changes state. LEDs indicate input state and output latch or unlatch pulses.

FEATURES

- **LED indicators: Pulse out: latch/unlatch, Command in: off/on**
- **24 VAC/DC power**
- **Selectable power-up state (PUP)**
- **Snap-track mounting for easy installation**

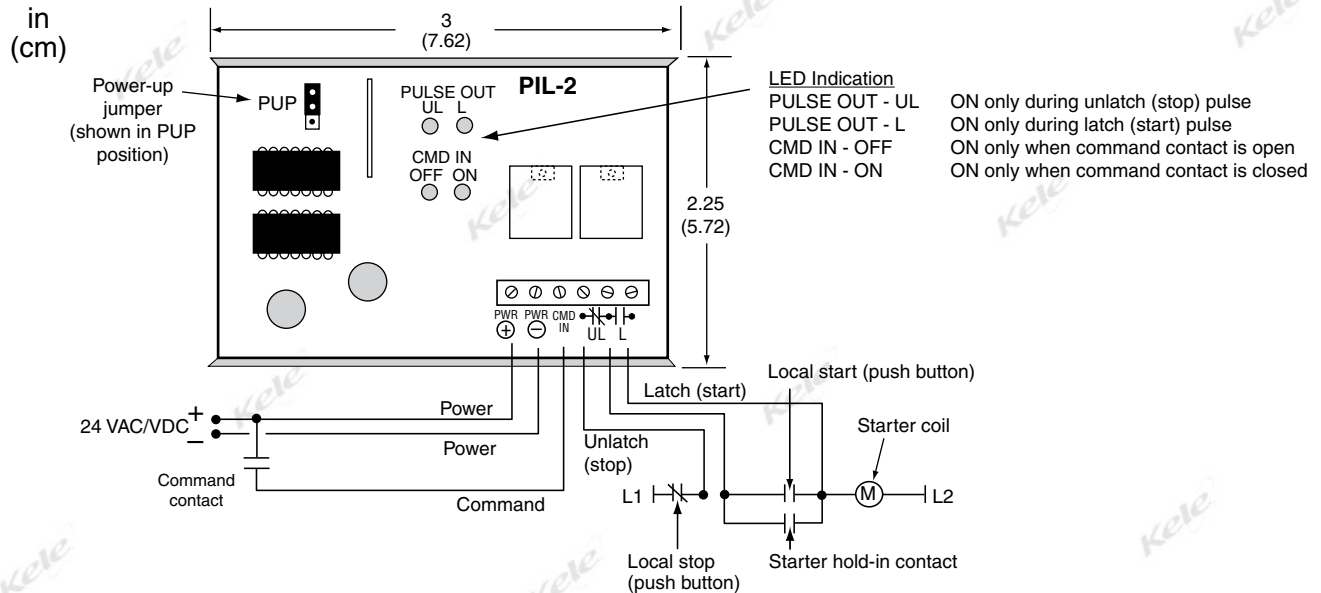


PIL-2

SPECIFICATIONS

Supply Voltage	24 VAC/VDC @ 50 mA
Input	SPST switch or relay
Output	One N.O. contact rated 120 VAC, 5A; one N.C. contact rated 120 VAC, 5A
Output Pulse Time	300 ms (contact Kele for special pulse time requirements, 5 sec maximum)
Weight	0.25 lb (0.11 Kg)
Warranty	18 months

DIMENSIONS



ORDERING INFORMATION

MODEL	DESCRIPTION
PIL-2	Motor starter interface, 300 ms pulse
PIL-2-C	Motor starter interface, special pulse (specify when ordering)